

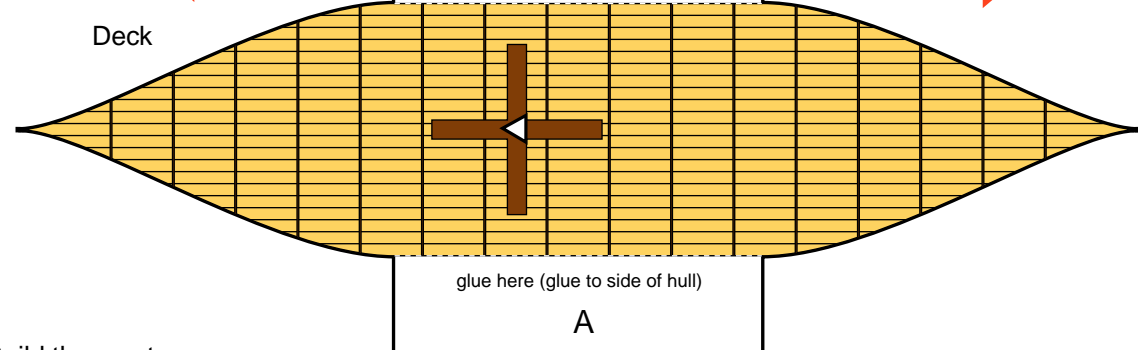
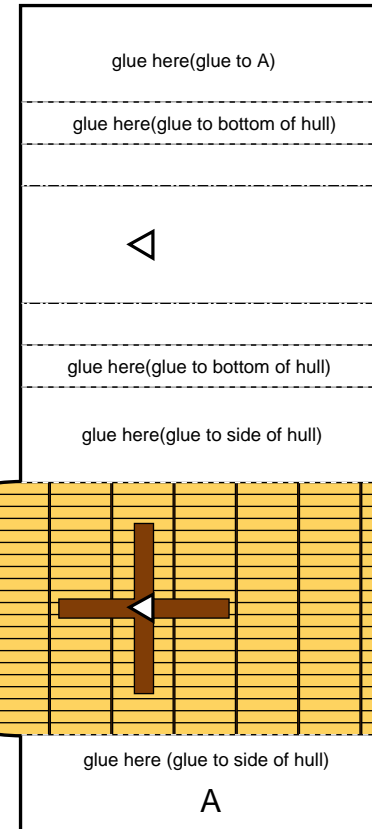
Canon World Papercraft Mini-book

Buildings of the World Series Norway Viking ship

Viking ships were used by the various clans of Vikings who lived in the region around Norway many years ago. Viking ships had one mast, located amidships. The hull was flat, which allowed the ships to sail up shallow rivers. Viking ships were very fast. It is thought that the Vikings traveled as far as North America in these ships.



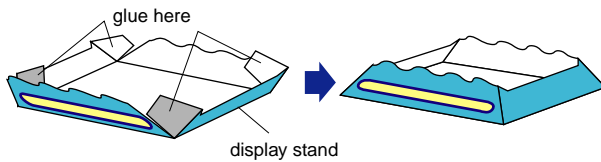
\* Cut out the card above and save it. You can collect the cards from each of the Papercraft projects to make your own mini-book!



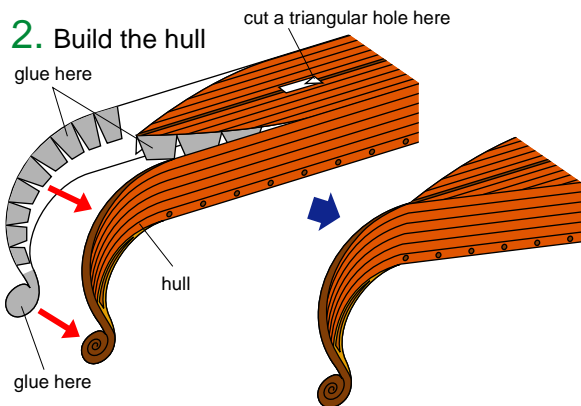
★Directions

Print out Page 1 and Page 2. Cut out all the parts, and fold along the mountain and valley fold lines.

1. Build the display stand

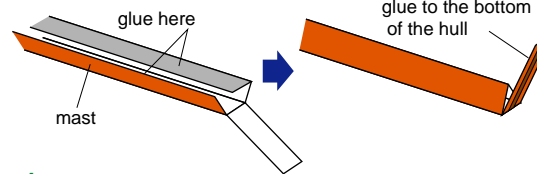


2. Build the hull



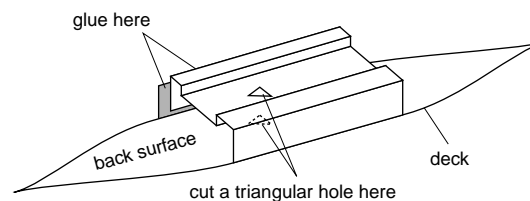
3. Build the mast

Fold the mast as shown to form a triangular cross-section.



4. Build the deck

Fold and glue the deck piece together as shown.



5. Assemble the ship

\* Take care to align the bow end of the deck with the bow of the hull.

